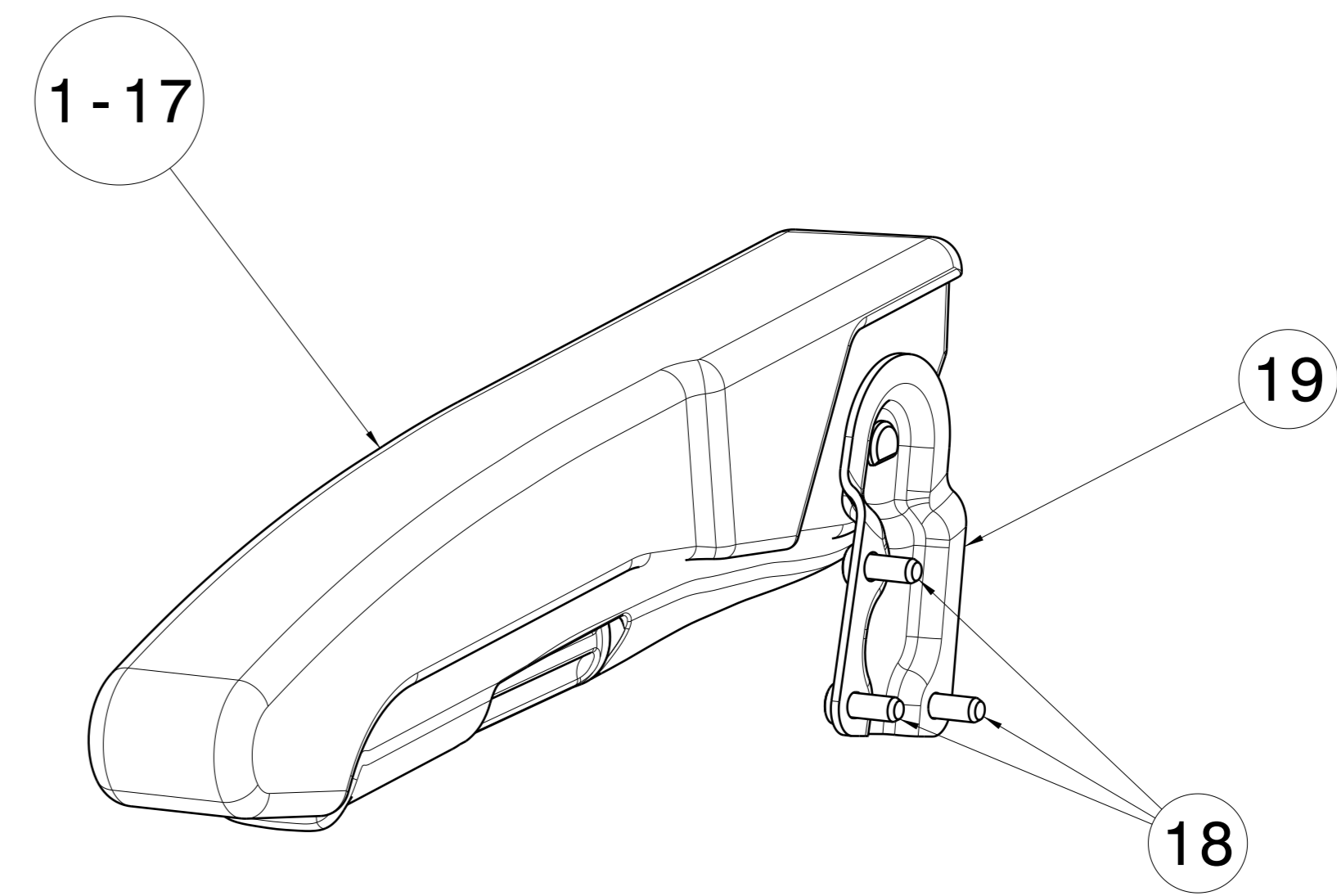


ITEM	PART NO.	PART NAME	QTY	QTY	QTY	QTY	QTY	QTY	QTY	QTY	QTY	QTY	QTY	QTY	QTY	QTY	QTY	QTY	QTY	
1	PAC-CB11-12242	Armrest Asm Trimmed RH - Peterbilt cloth, grey	1																	
2	PAC-CB12-12242	Armrest Asm Trimmed RH - Peterbilt cloth, tan		1																
3	PAC-CB01-12242	Armrest Asm Trimmed RH - Peterbilt cloth, black			1															
4	PAC-CB31-12242	Armrest Asm Trimmed RH - Peterbilt cloth, mocha w/grey thread				1														
5	PAC-CB32-12242	Armrest Asm Trimmed RH - Peterbilt cloth, mocha w/tan thread					1													
6	PAC-VB11-12243	Armrest Asm Trimmed RH - Peterbilt vinyl, charcoal						1												
7	PAC-VB01-12243	Armrest Asm Trimmed RH - Peterbilt vinyl, black							1											
8	PAC-VB31-12243	Armrest Asm Trimmed RH - Peterbilt vinyl, mocha w/grey thread								1										
9	PAC-VB32-12243	Armrest Asm Trimmed RH - Peterbilt vinyl, mocha w/tan thread									1									
10	PAC-VB42-12243	Armrest Asm Trimmed RH - Peterbilt vinyl, brown										1								
11	PAC-FC11-12243	Armrest Asm Trimmed RH - Peterbilt vinyl, dark grey											1							
12	PAC-FC12-12243	Armrest Asm Trimmed RH - Peterbilt vinyl, dark tan												1						
13	PAC-VB75-12243	Armrest Asm Trimmed RH - Peterbilt vinyl, black w/red stitching													1					
14	PAC-TA11-12244	Armrest Asm Trimmed RH - Peterbilt tough cloth, charcoal														1				
15	PAC-TA22-12244	Armrest Asm Trimmed RH - Peterbilt tough cloth, chocolate															1			
16	PAC-TA01-12244	Armrest Asm Trimmed RH - Peterbilt tough cloth, black																1		
17	PAC-12232	ARMREST ASM RH																		1
18	14081021	BOLT - M8 X 20 (PAC-11238)	3	3	3	3	3	3	3	3	3	3	3	3	3	3	3	3	3	3
19	PAC-10500	BRACKET - ARMREST RH	1	1	1	1	1	1	1	1	1	1	1	1	1	1	1	1	1	1
20	PAC-12156	LOCKING BOLT,ARMREST	1	1	1	1	1	1	1	1	1	1	1	1	1	1	1	1	1	1
21		BAG - FASTENERS	1	1	1	1	1	1	1	1	1	1	1	1	1	1	1	1	1	1
22		BOX	1	1	1	1	1	1	1	1	1	1	1	1	1	1	1	1	1	1

KIT NUMBER	KIT DESCRIPTION
PAC-SPCB11-11815	Armrest Asm RH Service Kit - Peterbilt cloth, grey
PAC-SPCB12-11815	Armrest Asm RH Service Kit - Peterbilt cloth, tan
PAC-SPCB01-11815	Armrest Asm RH Service Kit - Peterbilt cloth, black
PAC-SPCB31-11815	Armrest Asm RH Service Kit - Peterbilt cloth, mocha w/grey thread
PAC-SPCB32-11815	Armrest Asm RH Service Kit - Peterbilt cloth, mocha w/tan thread
PAC-SPVB11-11815	Armrest Asm RH Service Kit - Peterbilt vinyl, charcoal
PAC-SPVB01-11815	Armrest Asm RH Service Kit - Peterbilt vinyl, black
PAC-SPVB31-11815	Armrest Asm RH Service Kit - Peterbilt vinyl, mocha w/grey thread
PAC-SPVB32-11815	Armrest Asm RH Service Kit - Peterbilt vinyl, mocha w/tan thread
PAC-SPVB42-11815	Armrest Asm RH Service Kit - Peterbilt vinyl, brown
PAC-SPFC11-11815	Armrest Asm RH Service Kit - Peterbilt vinyl, dark grey
PAC-SPFC12-11815	Armrest Asm RH Service Kit - Peterbilt vinyl, dark tan
PAC-SPVB75-11815	Armrest Asm RH Service Kit - Peterbilt vinyl, black w/red stitching
PAC-SPTA11-11815	Armrest Asm RH Service Kit - Peterbilt tough cloth, charcoal
PAC-SPTA22-11815	Armrest Asm RH Service Kit - Peterbilt tough cloth, chocolate
PAC-SPTA01-11815	Armrest Asm RH Service Kit - Peterbilt tough cloth, black
PAC-SP11812	Armrest Asm RH Service Kit - Untrimmed



7496	CA	UPDATE ARMREST ASM PINS, REMOVE PAC-11749 01, ADD PAC-12156-B 01	15APR19	AY	LF	**
7376, 7377	BB	ADDED KITS FOR COLOR CODES 31, 32 AND 42	20JUNE	BT	**	**
7345	BA	REVISED PIN FOR TRIMMED ARMREST ASSEMBLIES	14SEPT15	BT	**	**
7335	AB	FIX KIT PINS AND CHANGE DESCRIPTION FOR PAC-SPVB75-11815	30JUL15	BT	**	**
7261	AA	RELEASED FOR SERVICE LONGER ARMREST	23JUN14	INT	**	**
CHG NO.	LET	REVISION	DATE	DRW	CR	APP

UNLESS OTHERWISE SPECIFIED DRAWING TOLERANCES ARE:
 LINEAR: ONE PLACE ± X.X, TWO PLACE ± X.XX
 ANGULAR: ONE PLACE ± X.X°, TWO PLACE ± X.XX°
 DIMENSIONING & TOLERANCING PER ASME Y14.5 M-1994
 FIRST ANGLE PROJECTION
 COMPUTER GENERATED GRAPHICS
 FILE NO. SEE PART BLOCK
 DO NOT SCALE THIS DRAWING
 DRAWN BY: DATE: CHECKED: APPROVED: INTENT: (MARKED) ** ** **
 MATERIAL: GRAMMAG SCALE FULL
 NAME: ARMREST - RH PETERBILT SERVICE KIT NO: PAC-SP11815-DWG

PAC-SP11815-DWG
 UNCONTROLLED