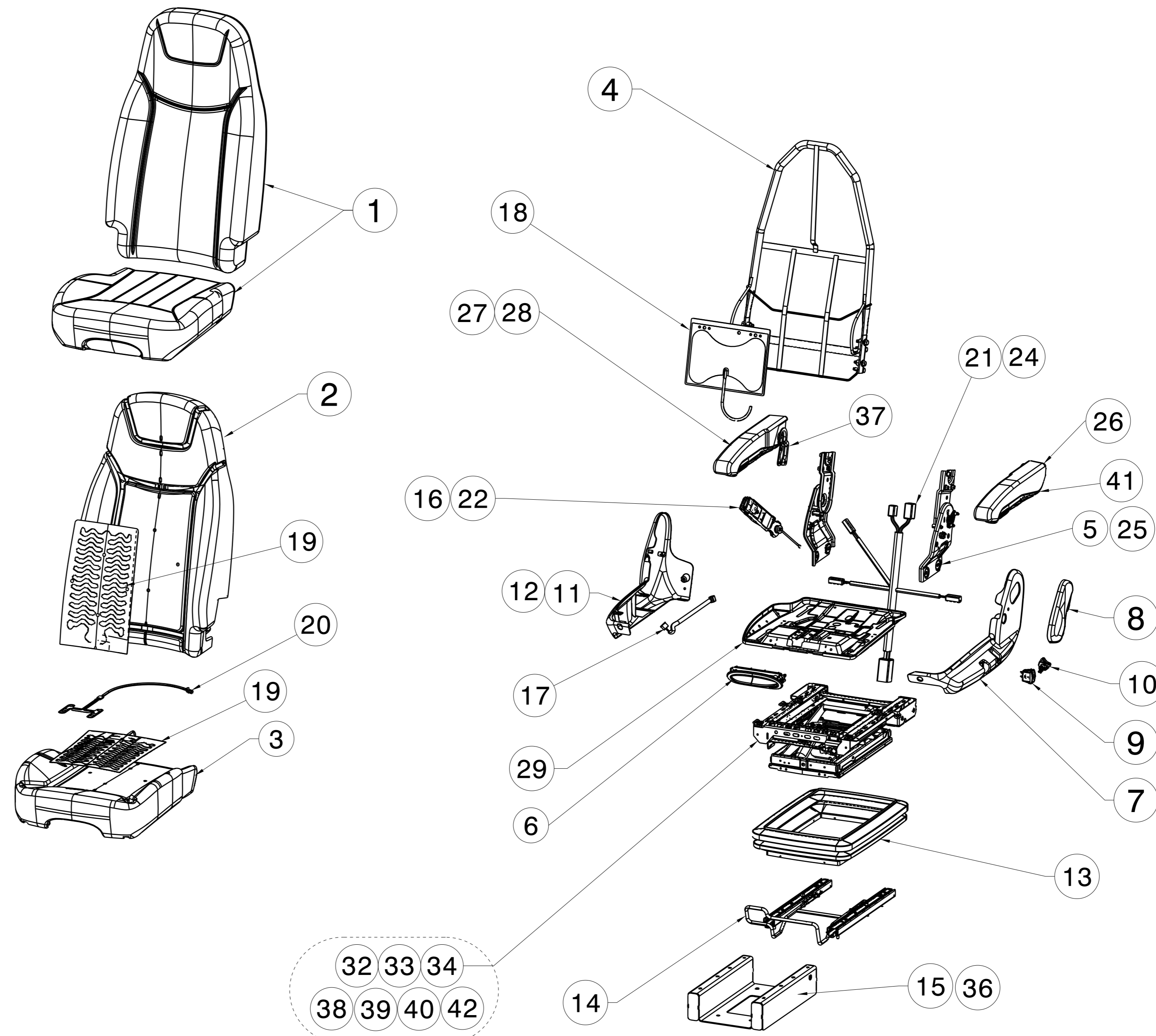


ITEM	PETERBILT PARTS	GRAMAG SERVICE KIT NO.
1	TRIM - PETERBILT	SEE DRAWING PAC-SP12004
2	FOAM - PETERBILT HIGHBACK	PAC-SP11248
3	FOAM - PETERBILT CUSHION	PAC-SP11249
4	BACKFRAME - PETERBILT	PAC-SP12127
15	RISER - 587, DAY CAB	PAC-SP11268
19	HEATERS-PETERBILT BACK & CUSH.	PAC-SP11304
25	RESTRICTED RECLINE & PIVOT BRKT	PAC-SP11256
26	ARMREST ASM LH PETERBILT	SEE DRAWING PAC-SP11814
27	ARMREST ASM RH PETERBILT	SEE DRAWING PAC-SP11815
28	STOWABLE ARMREST RH PETERBILT	SEE DRAWING PAC-SP11816
36	RISER - 587, SLEEPER CAB	PAC-SP11839

ITEM	COMMON PARTS	GRAMAG SERVICE KIT NO.
5	FULL RECLINE & PIVOT BRKT	PAC-SP11255
6	HANDLE ASM - CUSHION	PAC-SP11257
7	SIDE SHIELD - LH	PAC-SP11258
8	HANDLE ASM - RECLINE	PAC-SP11259
9	SWITCH - SUSPENSION HEIGHT	PAC-SP11260
10	SWITCH - LUMBAR	PAC-SP11261
11	SIDE SHIELD - RH	PAC-SP11262
12	SIDE SHIELD - RH CLIMATE	PAC-SP11263
13	SKIRT	PAC-SP11264
14	TRACK AND HANDLE ASM	PAC-SP11265
16	BUCKLE, WEBBED NO WIRE (NGP & 587)	PAC-SP11933
17	SWITCH - HEAT	PAC-SP11294
18	LUMBAR BAG AND HOSES	PAC-SP11993
20	OCC. SENSOR	PAC-SP11272
21	WIRE HARNESS HEAT (NGP & 587)	PAC-SP11273
22	BUCKLE, WEBBED WITH WIRE	PAC-SP11932
23	WIRE HARNESS (OCC SENSOR, BUCKLE) NGP & 587	PAC-SP11305
24	WIRE HARNESS (OCC SENSOR, BUCKLE, HEAT) NGP & 587	PAC-SP11306
29	CUSHION PAN ASM	CONTACT GRAMAG
31	AIR SEAT HOSES AND CONNECTORS	PAC-SP11995
32	SUSPENSION AIR BLADDER	PAC-SP11877
33	SHOCK ABSORBER	PAC-SP11879
34	SEAT TILT MECHANISM	PAC-SP11880
37	STOWABLE ARM REST BRACKET	PAC-SP11869
38	FORE AND AFT ISOLATOR SERVICE KIT	PAC-SP11883
39	FORE AND AFT ISOLATOR CABLE SERVICE KIT	PAC-SP11884
40	FORE AND AFT ISOLATOR HANDLE SERVICE KIT	PAC-SP11885
41	ARMREST LOCKING BOLT AND CAP SERVICE KIT	PAC-SP11996
42	CUSHION PAN GUIDE SERVICE KIT	PAC-SP12058



CONTACT GRAMAG FOR ALL OTHER SUSPENSION ISSUES

APPLIES TO PETERBILT PART NO'S:

- S78-1082-00000000
- S78-1107-00000000
- S78-1117-00000000
- S78-1125-00000000
- S78-1175-00000000

REV	DATE	BY	DESCRIPTION	DATE	DRW	CK	APP
7477		BB	ADDED PAC-SP11883	17JUL18	BT	LF	**
7465		BA	ADDED S78-1175-00000000; REMOVED PAC-SP11252, ADDED PAC-SP12127	12APR18	BT	LF	**
7422		AN	ADDED PAC-SP12058	31MAR17	BT	**	**
7414		AM	REMOVED PAC-SP11883	06JAN17	BT	**	**
7395		AL	ADDED KIT PAC-SP11996; CORRECTED ITEM 37 PN PAC-SP11869 WAS PAC-SP11869	10OCT16	BT	**	**
7403			REMOVED PAC-SP11302, ADDED PAC-SP12004				
7392		AK	REMOVED PAC-SP11270 AND PAC-SP11482; ADDED PAC-SP11993 AND PAC-SP11995; ADDED NOTE REGARDING SUSPENSIONS	14JUL16	BT	**	**
7394							
7348		AJ	RELEASED WEBBED BUCKLE; PAC-SP11932 WAS SP11597, PAC-SP11933 WAS PAC-SP11596	30JUL15	GAS	**	**
7328, 7332		AH	KITS UPDATED	08AP15	GAS	**	**
7325		AG	ADDED PN PAC-SP11839; ADDED PN S78-1125-00000000	05DE14	GAS	**	**
7311		AF	ITEMS 34 AND 35 ADDED	30SE14	GSS	**	**
7310		AE	ITEMS 29 & 30- "CONTACT GRAMAG" WAS "NOT SERVICEABLE"	12SE14	GAS	**	**
7277		AD	ITEM 33 PART NUMBER 1183991 WAS COR-51962-S	27FEB14	INT	**	**
7261		AC	REVISED WITH LONGER ARMREST ITEMS 26-28	19JAN14	INT	**	**
7270		AB	ADDED SUSPENSION COMPONENT KITS ITEMS 32-33	14JAN14	INT	**	**
7262		AA	RELEASED FOR SERVICE	22OCT13	INT	**	**

UNLESS OTHERWISE SPECIFIED DRAWING TOLERANCES ARE: LINEAR ONE PLACE ± X.X TWO PLACE ± X.XX		ANGULAR ONE PLACE ± X.X° TWO PLACE ± X.XX°		DIMENSIONING & TOLERANCING PER ASME Y14.5 M-1994	
DRAWN BY: INTENT		DATE: 10SEP12		CHECKED: **	
APPROVED: **		MATERIAL:		SCALE: X	
NAME: 587 GT701 SEAT ASM SERVICE KIT		NO:		PAC-SP11772-DWG	

PAC-SP11772-DWG UNCONTROLLED