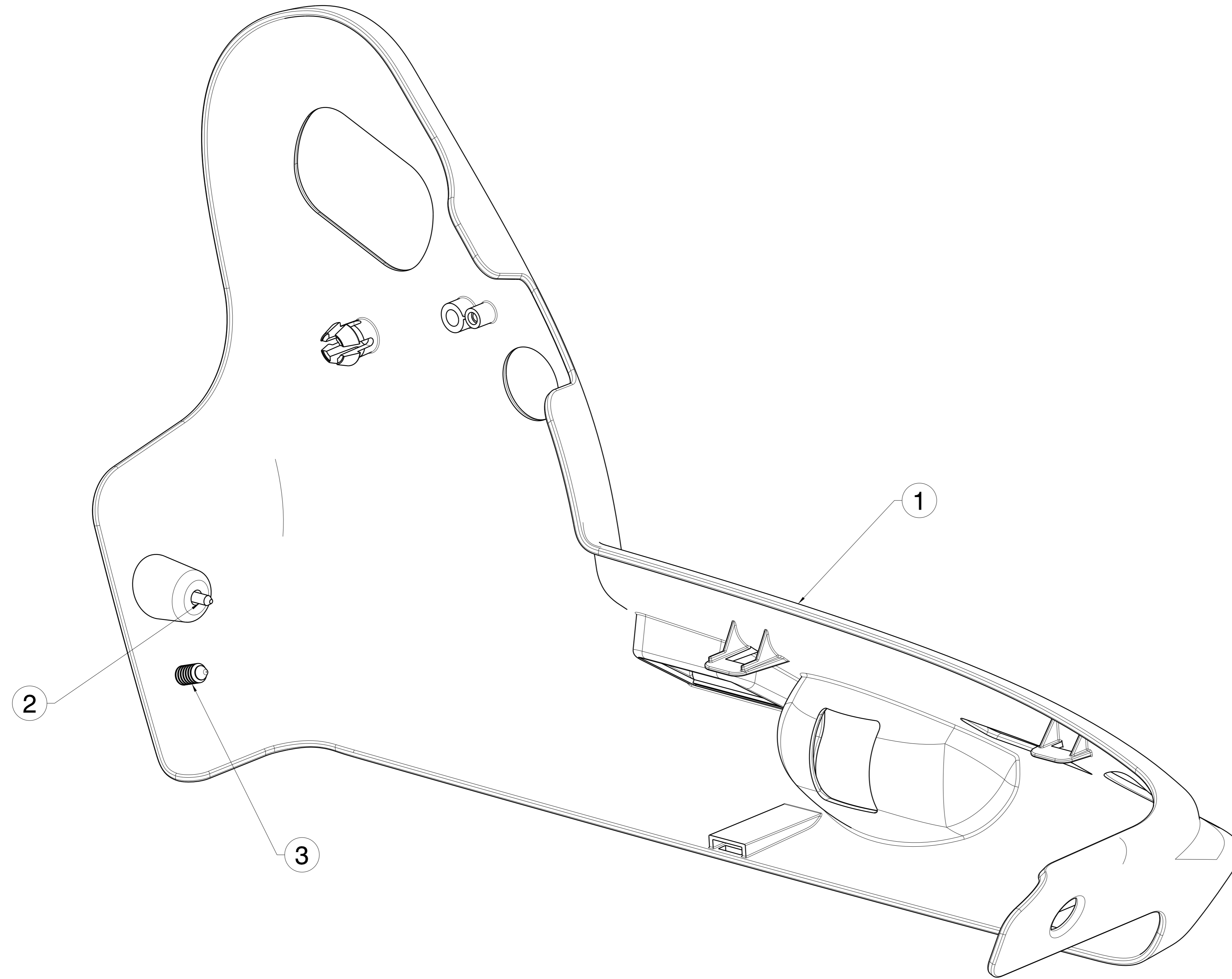


ITEM	PART NO.	PART NAME	QTY
1	PAC-10596	SIDE SHIELD LH GT703	1
2	W715822	SCREW - M4 X 12 (PAC-11286)	1
3	CONI-506920	FASTENER - XMASS TREE	1
4		BAG - FASTENERS	1
5		BOX	1



CHG NO.	LET	REVISION	DATE	DRW	CHK	APR
7245	AB	DELETED SCREW PAC-10994	08FEB13	INT	**	**
7216	AA	RELEASED FOR SERVICE	26JUL12	INT	**	**

UNLESS OTHERWISE SPECIFIED DRAWING TOLERANCES ARE				DIMENSIONING & TOLERANCING PER ASME Y14.5 M-1994			
LINEAR		ANGULAR		LAST VIEW	3RD ANGLE PROJECTION		
ONE PLACE	± X.X	ONE PLACE	± X.X °	LAST SECT			
TWO PLACE	± X.XX	TWO PLACE	± X.XX °	COMPUTER GENERATED GRAPHICS			
- DO NOT SCALE THIS DRAWING -				FILE NO. SEE PART BLOCK			
DRAWN BY	DATE	CHECKED	APPROVED	THIS DRAWING IS COPYRIGHTED AND REMAINS THE EXCLUSIVE PROPERTY OF GRAMMAG TRUCK INTERIOR SYSTEMS, INC. UNAUTHORIZED COPYING, REPRODUCTION OR OTHER USE IS PROHIBITED AND WILL BE PROSECUTED.			
INTENT	16APR12	**	**	UNLESS OTHERWISE SPECIFIED DIMENSIONS ARE IN MM			
MATERIAL				GRAMMAG truck interior systems		SCALE FULL	
NAME SIDE SHIELD LH GT703 - SERVICE KIT				NO PAC-SP11334-DWG			

PAC-SP11334-DWG
UNCONTROLLED